

LEARN.  
ASPIRE.  
BE



**Address:** Phoenix World School, Gat No. 1344/3,  
Millionaire Road, Beside Gera Bungalows,  
Kharadi, Pune- 411014.

**Landline No. :** 020 - 65313333

**Mobile No. :** +91 - 8856833333

**Email Id :** info@phoenixworldschool.com

**Web:** www.phoenixworldschool.com







The Phoenix World School follows the CBSE and IGCSE (Cambridge International Examination) curriculum. The Assessments comprise of Formative and Summative Assessments which involve oral and written tests.

The Phoenix World School follows the CBSE and IGCSE (Cambridge International Examination) curriculum.

**CBSE:** The Assessments comprise of Formative and Summative Assessments which involve oral and written tests.  
**IGCSE:** As per standards set by Cambridge International Examination.

Develop a Passion for learning. If you do, you'll never cease to grow.

**Anthony. D' Angelo**

#### **PHOENIX WORLD SCHOOL IS ALL ABOUT INSTILLING THIS ZEAL TO LEARN.**

The Phoenix Management visualized a school that not only offers State-of art 6 acres of infrastructure but would also provide an environment conducive to learning, bearing in mind the uniqueness of each child and his talents. The architecture and design of Phoenix World School is developed, keeping in mind the dynamic needs of our next generations.

With the ever changing and evolving education scenario, Phoenix World School aims at building overall personality and instilling 21st century skills needed to sustain in the current environment.

#### **THE SCHOOL PHILOSOPHY**

Every child is unique and deserves love and care. Phoenix world school is the place where learning is fun and young minds are ignited to gain sublimated knowledge. Every human is curious by nature and wants to know. We would be encouraging students to enquire and ask. If they are made to love to participate in every learning activity in the school, the beginning of learning is properly done. Making students responsible for their task completion is the first step towards becoming responsible citizens and lovable sons/ daughters. The learning process begins when the child is in mother's womb and continues throughout life. So we need to provide them age appropriate learning tasks so that learning process remains an interesting activity throughout the schooling time. Our research team would be constantly developing the supplementary activities to keep students' morale high.





# VISION

Empowering students with world class education, creating the importance of lifelong learning and positive attitude which will make them global citizens who contribute to the benefit of the society.

# MISSION

Building a strong educational foundation, instill values that shape character and motivate students to reach their true potential.



# DIRECTOR'S MESSAGE



## Dear Parents,

At the very outset, I thank you for considering Phoenix World School for your dear child. Choosing the right school is a task itself. It is said that well begun is half done and same is applicable in making the right choice of a school.

India, in the past was a world leader in many areas including Education, Culture, Agriculture, Medicine, Trade & commerce and so on. We, the team Phoenix, believe that India holds the ability to lead the world once again because we have the highest number of young people than any other country. Next generations are expected to just do that. But for that we need to provide students with the blend of traditional and rational education. We also need to cater for the needs from outside the syllabus.

"Nothing is permanent in the universe except change." The field of education also is not an exception to it. We believe that the needs of every child are different because everyone is unique, and the needs of every decade in general and every year / month in particular are different. The geographical and social needs in the field of education also vary a lot. The Phoenix research team would be taking care of these facts and constantly developing the Phoenix supplement to empower the regular board syllabus.

## OUR MANTRA FOR EVERY PHOENIXIAN IS

ACADEMICS	Sufficiently Sound
PHYSIQUE	Supple and Strong
MIND	Calm and Curious
SOUL	Pure and Pious

ATTITUDE	Positive and Proactive
VALUES	Blend of Indian Tradition and Global
HABITS	Winning and Worthy

To sum up, we expect a student who is a good citizen with strong winning instinct and who can succeed in any corner of the globe.

Helping every student to recognize his/her uniqueness, potential and special talent in him/her is a very vital task. We would be doing that with parents' initiative and feedback. The state of art infrastructure and stress free atmosphere in the school would definitely help the child to groom well under the guidance of dedicated and committed team of qualified facilitators.

Educating a child is a partnership between parents and the school, built on strong grounds of understanding, discipline and co-operation. We hope to have an strong and lasting partnership with you.

Let me sum up with the Phoenix spirit -

“

Never say it's over, Soar  
higher and higher,  
Through your **DEEDS**,  
lead and live forever, forever.

”

Thank you once again  
- Dhanesh Gandhi







## CORE VALUES

### COMPREHENSIVE EDUCATION

At PWS, each and every activity is aimed at providing an education to our students which is relevant in physical, mental, academic or social context. We don't train our students just for the sake of completing training requisites. Our unwavering focus is on offering a comprehensive education which is useful in all walks of life for our students.

### LINKING PREFERENCE WITH PERFORMANCE:

We understand that every student is unique by way of his/her interests and preferences. By associating performance criteria with the areas of interests of our students, we constantly motivate growth and satisfaction in them.

### EXCELLENCE

**"We are what we repeatedly do. Excellence then, is not an act, but a habit."**

Phoenix World School firmly believes this and we strive at achieving the highest standards in academic achievement and organizational performance.

### PRACTICAL APPROACH

There are different ways of acquiring knowledge. On one side is theory and on the other side is practical application of theory. We believe in 'Learning by doing'. Experiential learning is thus a part of our curriculum.

### INTEGRITY

We respect the need to build an honest, compassionate and safe working environment for our staff and students. At PWS, we are dedicated to build a reliable and positive relationship with everyone who is part of PWS.

### EQUALITY

Our holistic education program is aimed at minimizing and eliminating the achievement gap and encouraging every student to become equally successful.

### CITIZENSHIP

The education imparted at PWS is dedicated towards building an ingrained sense of citizenship and democratic principle in each and every child. Our commitment to strengthening the community with a robust educational base is the driving force behind our over-all curriculum.

### ACHIEVING GOALS WITHOUT OVER-LOADING WORK

Being a day-boarding school, at PWS, we firmly believe in the concept of finishing school work in school itself. The academic work load is distributed in such a manner that students are not burdened with home-work assignments and encouraged to finish their learning exercises in the school itself.

### SPORTSMANSHIP AND TEAM SPIRIT

Sportsmanship here refers to playing the game of life in accordance with the spirit imbibed on the playing fields. At Phoenix World School, we encourage students to display fairness, honesty and inculcate team spirit which nowadays is a pre-requisite for success.

### CREATING, SELF -ESTEEM AND CONFIDENCE

**It is rightly said by Dr. Joyce Brothers: "A strong positive Self Image is the best possible preparation for success."**

Sportsmanship here refers to playing the game of life in accordance with the spirit imbibed on the playing fields. At Phoenix World School, we encourage students to display fairness, honesty and inculcate team spirit which nowadays is a pre-requisite for success.



6 ...it's not learning that's important. It's learning what to do with what you learn and learning why you learn things that matter.



## ACADEMICS

The quintessential foundation of PWS is ingrained in our holistic and dynamic academic system. We also have an NOC from state board in place to allow for complete flexibility and freedom in curriculum design. The concept of Multiple Intelligence by Howard Gardner is the primary logic behind our in-school and project based teaching methodology. At a glance, the comprehensive curriculum of PWS can be represented as a multidirectional process which incorporates a holistic development of every child.

Regular participation in these activities shapes the overall personality of the students. Physical activities not only strengthen the body but serves as a great means of channelizing students' energy in a positive direction.

Activities at PWS are designed to tap the creative potential of a child. Several opportunities to 'think differently' or 'think out of the box' are provided to the students. We ensure that students develop their talents in the fields of Academia, Sports and Fine Arts. We groom each student into a confident child of tomorrow.

In this busy and fast pace of life, we are forced to face many problems. Reasoning and analytical skills help us to visualize and solve complex problems. At PWS, reading, comprehending, Mathematical skills are taught with the aim to develop reasoning and analytical skills.

is the primary objective of our multi-faceted training process. We, at PWS, strive to develop each student in such a manner that they develop a positive self image .The inherent confidence that comes from personal, social and emotional development prepares our students for the competitive outside world and makes them star performers in all walks of life.

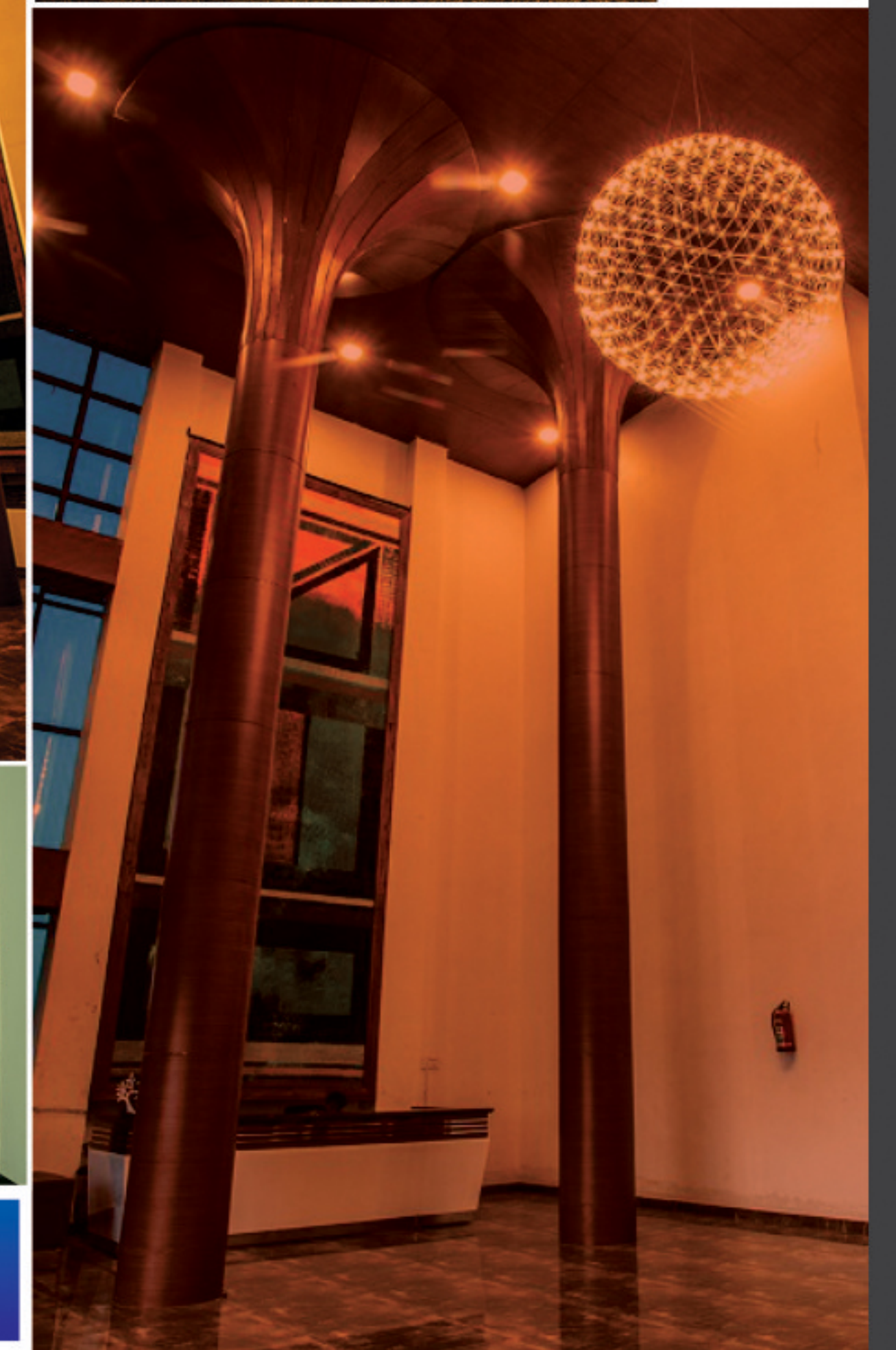
Emphasis on developing language skills is an important element of our training process. Although English is the global language, understanding of other languages and cultures across the globe is definitely the need of the hour. Students are therefore exposed to languages like German and French at Phoenix World School.

One of the key areas of development which helps individuals to organize ideas and thoughts to make sense of the world they live in. At PWS, students are given the freedom to learn through trial & error, experimenting, role play and questioning skills.

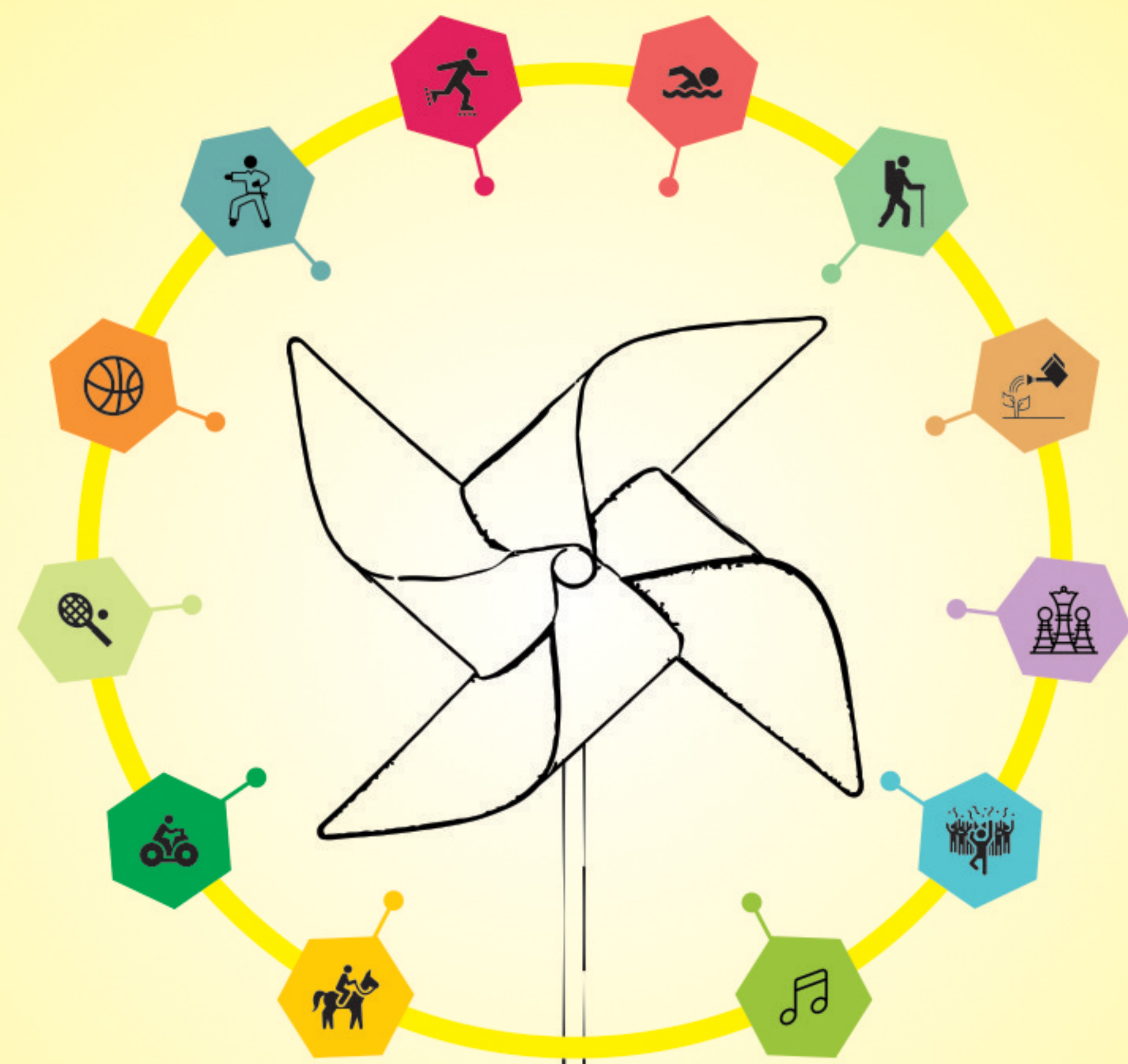


# OUR INFRASTRUTURE

The architecture and design of Phoenix World School is developed, keeping in mind the dynamic needs of our next generations. As our education system is built on the philosophy of building overall personality; our infrastructure also incorporates areas dedicated for physical and mental development. PWS infrastructure proudly maintains Digital Classrooms, Air Conditioned Campus, Music Room, Dance Room, Indoor Gymnasium and Outdoor Playground, Swimming Pool, Basketball Court, Tennis Court, GPS Tracking-Enabled Transport Facility.







## ACTIVITIES

**At Phoenix World School**, we understand the need to include extra-curricular activities at regular intervals in the academic year to ensure over-all growth and personality development of our students. Varied activities are incorporated into our curriculum such as:

